

P6191 NEW

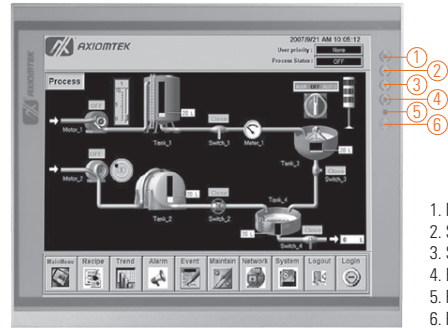
19" SXGA TFT Industrial LCD Monitor

Features

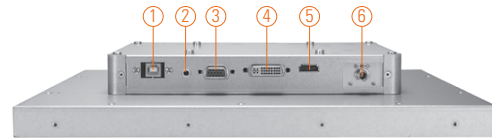
- 19" SXGA TFT LED backlight LCD
- NEMA 4/12 (IP65)- compliant panel mounting flat panel monitor
- Supports panel mount, wall mount, rack mount and VESA arm
- Resistive touchscreen
- Supports full range screw-type (locked) AC-in or 12V/24V DC-in (option)
- VGA, HDMI and DVI-D with multi-signal inputs



▲ Ultra-slim mechanism design



1. Menu
2. SEL+
3. SEL-
4. Exit
5. Power LED
6. Power switch



1. T/S port
2. Line-in
3. VGA
4. DVI-D
5. HDMI
6. Power

Introduction

The P6191 is an ultra slim industrial LCD monitor, which adopts 19-inch 350 nits SXGA LED backlight LCD display and supports multi-signal interfaces including DVI, VGA and HDMI. Featuring NEMA 4/12 & IP65 compliant front bezel, screw-type adaptor plug design, and 12/24V DC-In means it is fit for all kinds of industrial environments. Moreover, the P6191 supports panel mount, wall mount, rack mount or VESA FPMPI (Video Electronics Standards Association Flat Panel Monitor Physical Mounting Interface) mounting. With the compact mechanism design, users can enjoy free from space constraint. It is especially suitable for POI/POS, excellent HMI and all kinds of heavy-duty industrial fields.

Specifications

Front Bezel	NEMA 4/12 (IP65)-compliant, metal front bezel	
Mounting	Panel mount, wall mount, rack mount or VESA arm FPMPI mounting (video electronics standards association flat panel monitor physical mounting interface)	
LCD Panel	Display	19" SXGA TFT LED
	Max. Resolution	1280 x 1024
	Max. Colors	16.7M
	Active Area (mm)	376.32 x 301.06
	Pixel Pitch (mm)	0.24 x 0.24
	Response Time	8ms
	Backlight	LED backlight
	Backlight MTBF	50,000 hrs
	Viewing Angle (H/V)	170°/160°
	Contrast Ratio	1000 (TYP.)
	Brightness (cd/m ²)	350 nits
Display Control	OSD (on screen display)	
Display Mode	VGA 640 x 350 (70Hz), VGA 640 x 480 (60/72/75Hz), VGA 720 x 400 (70Hz), SVGA 800 x 600 (60/72/75Hz), XGA 1024 x 768 (60/72/75Hz), SXGA 1280 x 1024 (60/72/75Hz)	

Specifications

Input Signal	DVI-D VGA HDMI Touchscreen: Serial RS-232 or USB interface	
I/O Connectors	1 x RS-232 or USB for touchscreen version 1 x DVI-D 1 x VGA 1 x HDMI 1 x Screw-type DC power input	
Power Adapter	Screw-type external AC/DC power adapter	
Power Consumption	17 W	
Touchscreen	Thickness	Resistive: 3.2 mm
	Light Transmission	Resistive: 80%
	Power Consumption	Resistive: +5V @ 100mA
	Touch Life	Resistive: 35million touches Controller interface: RS-232 D-type 9pin male connector or USB
Dimensions	482 mm (18.98") (W) x 55 mm (2.17) (D) x 380 mm (14.96") (H)	
Packing Dimensions	595 mm (23.43") (W) x 230 mm (9.06") (D) x 555 mm (21.58") (H)	
Weight (net/gross)	TBD	
Environment	Operating temperature: 0°C ~ +45°C (+32°F ~ +113°F) Relative humidity: 20%-90% @ 40°C, non-condensing	
Packing List	1x VGA cable 1x RS-232 or USB cable for touchscreen (for touch version) 1x Audio cable 1x EU/US power cord (for AC version)	
Certificate	CE	

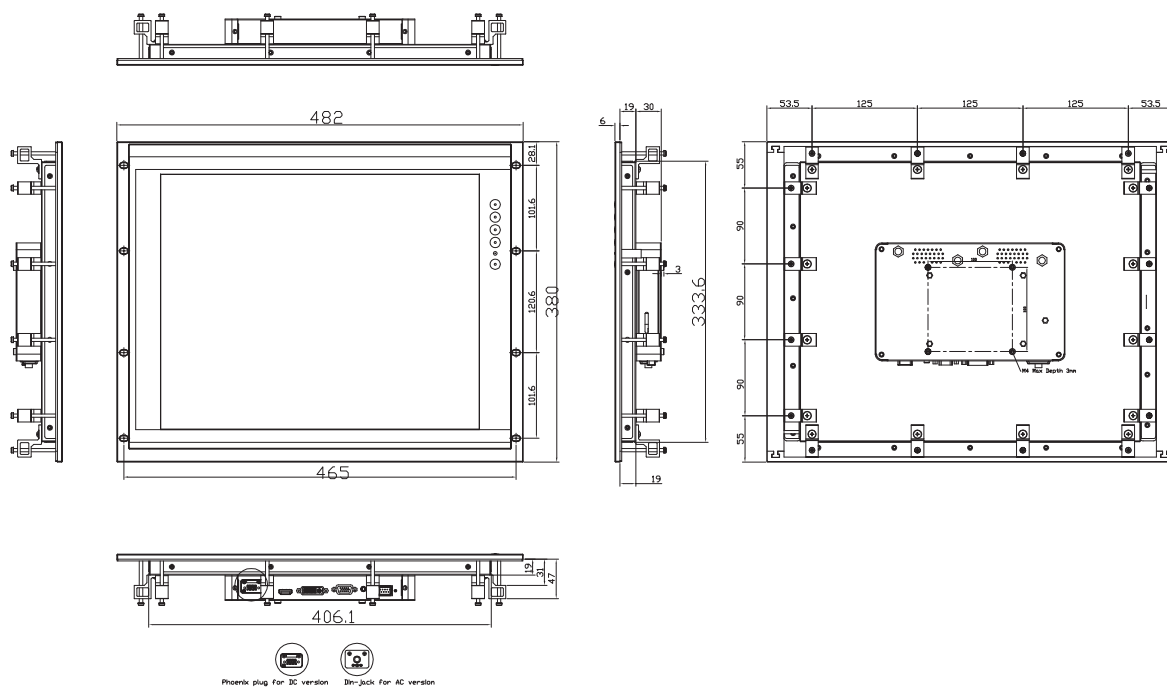
Ordering Information

AC Power	Resistive (RS-232)	P6191PR-AC-RS-US-EU
	Resistive (USB)	P6191PR-AC-U-US-EU
	Glass	P6191PG-AC-US-EU
12V/24VDC Power	Resistive (RS-232)	P6191PR-DC-RS
	Resistive (USB)	P6191PR-DC-U
	Glass	P6191PG-DC

Optional Accessories

5946L203800E	HDMI cable
59461713400E	DVI cable
TBD	Panel mount kit
82231770050E	Wall mount kit
E226171106	Desktop stand

Dimensions



* All specifications and photos are subject to change without notice.

