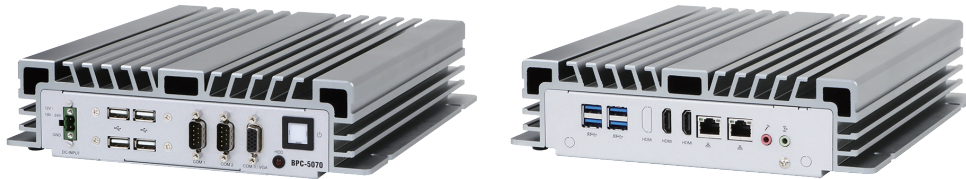


Fanless Embedded Box PC with 7th / 6th Generation Intel® Core™ i7/i5/i3/Celeron Processor



Key Features

- 7th / 6th Gen. Intel® Core™ Processor up to 3.4 GHz
- BPC-5070-1A1 Supports Triple Independent Displays
- BPC-5070-2A1 Supports Dual Independent Displays
- BPC-5070-1A1 Supports RAID 0 / 1
- -20 ~ 60°C Operating Temperature

Applications

- Embedded Digital Signage Control Systems
- Factory Automation
- Image Processing
- Transportation Management
- Machine Automation

→ Ordering Information

Part No.	Description
BPC-5070-1A1	Intel® Core™ i LGA1151 CPU, Q170, 4x USB3.0, 4x USB2.0, 2x RS-232/422/485, 2x GbE, 3x HDMI, 1x VGA, RAID 0/1, DC 12/19~24V, Phoenix Connector
BPC-5070-2A1	Intel® Core™ i LGA1151 CPU, H110, 4x USB3.0, 4x USB2.0, 2x RS-232/422/485, 2x GbE, 2x HDMI, 1x VGA, DC 12/19~24V, Phoenix Connector

→ Packing List

Description
1 x BPC-5070
1 x Power Adaptor
1 x Power Cord

→ Optional Items

Part No.	Description
AWD-WF001	Wi-Fi 802.11 b/g/n (1T1R) + 1 Antenna, Half Size
AWD-WF003	Wi-Fi 802.11 a/b/g/n/ac/BT4.0 (2T2R) + 2 Antennas (Dual Band), Half Size
i7-6700TE	Intel® 6th Gen Core™ i7-6700TE (8M Cache, 2.40 up to 3.4 GHz)
i7-7700T	Intel® 7th Gen Core™ i7-7700T (8M Cache, 2.90 up to 3.8 GHz)
i5-7500T	Intel® 7th Gen Core™ i5-7500T (6M Cache, 2.70 up to 3.30 GHz)
i5-6500TE	Intel® 6th Gen Core™ i5-6500TE (6M Cache, 2.30 up to 3.30 GHz)
i3-6100TE	Intel® 6th Gen Core™ i3-6100TE (4M Cache, 2.70 GHz)

→ Specifications

Model		BPC-5070-1A1	BPC-5070-2A1
Processor System	CPU	Socket LGA 1151 for Intel® Core™ i7/i5/i3/Celeron (Skylake-S)	
	Frequency	N/A	
	System Chipset	Intel Q170	Intel® H110
	Cache	N/A	
	BIOS	UEFI	
Memory	Technology	Dual-Channel DDR4 2133 MHz SDRAM	
	Max. Capacity	32 GB	
	Type	2x (260-pin SO-DIMM)	
Display	Graphics Engine	Intel® Gen9 Graphics DX 11/12, OGL 4.3/4.4	
	HDMI	3x HDMI 1: up to 4096 x 2160 @ 60 Hz HDMI 2 & 3: up to 4096 x 2160 @ 30 Hz	2x, up to 4096 x 2160 @ 24 Hz
	DP	N/A	
	VGA	1x up to 1920 x 1200 @ 60 Hz	
	DVI	N/A	
Front I/O Interface	USB	4x USB 2.0	
	Serial Port	2x RS-232/422/485	
	Ethernet	N/A	
	Audio	N/A	
	GPIO / DIO	N/A	
	Antenna Hole	N/A	
	Others	N/A	
Rear I/O Interface	USB	4x USB 3.0	
	Serial Port	N/A	
	Ethernet	2x GbE (LAN 1: Intel® I219LM, LAN 2: Intel® I210)	2x GbE (LAN 1: Intel® I219V, LAN 2: Intel® I210)
	Audio	Line Out, Mic In (Realtek ALC887/897 HD)	
	GPIO / DIO	N/A	
	Antenna Hole	2	
	Others	N/A	
Storage	2.5" HDD / SSD	2x SATA III (6.0 Gb/s), (7 mm 2.5" HDD Only)	
	M.2	N/A	
	mSATA	1x mSATA (Mux with mini-PCIe Full Size)	1x mSATA
	RAID	RAID 0/1	
Expansion	Mini PCIe	1x Full Size (PCIe x1, SATA III (mSATA), & USB 2.0), 1x Half Size (PCIe x1 & USB 2.0)	1x Half Size (PCIe x1 & USB 2.0)
	M.2	N/A	
	PCI / PCIe	N/A	
	SIM Holder	N/A	
Power	Power Mode	AT / ATX	
	Power Supply Voltage	12/19~24V DC Input	
	Power Connector Type	Phoenix Connector	
	Power Consumption (Typical)	0.8 A @ 12 V (9.5W)	
Mounting	Type	Wall Mount	
Environment	Operating Temperature	-20~60°C (-4~122° F) (Humidity: 60°C @ 80% RH Non-condensing) w/ Extended Temp. RAM & M.2 SSD	
	Storage Temperature	-40~75°C and 60°C @ 95% RH Non-condensing	
	Humidity	5~95% @ 40°C, Non-condensing	
	Vibration	1 Grms, IEC 60068-2-64, Random, 5~500 Hz, 1 Oct/min., 1hr/axis, x, y, z 3 axes	
	Shock	20 G, IEC 60068-2-27, Half Sine, 11 ms Duration	
General	Certification	CE, FCC Class A	
	Thermal Dissipation	Fanless System	
	Material	Extruded Aluminum	
	Dimensions (W x H x D)	238 x 61 x 245 mm (9.37" x 2.40" x 9.64")	
	Net Weight	3 kg (6.6 lb)	
Operating System	Windows 7/8.1/10, WES7-E/P, Ubuntu 14.04		

BPC-5070

→ Dimensions

