

## Embedded Smart City Box

- PoE Ultra, LTE/WiFi, Fiber, Cloud
- IIoT Serial, IO, Lora, Audio
- Solar Boost /Battery

### SCB1000/1200 Series

The SCB1000/1200 series are fully integrated communication systems within an IP67 enclosure for Smart City and Industrial Internet of Thing (IIoT) applications. The Gigabit 802.3bt ultra PoE /802.3at PoE plus ports, Fiber SFP, Serial, Voice, DI, DO are protected by weather proof cable gland connectors. It is greatly flexible with different power in/out sources, internal USB, SD, Ethernet and mPCIe socket for wireless expansion. Comparing with traditional cabinets, the SCB1000/1200 series save you a lot of time and cost for system integration. The embedded MQTT and RESTful API enables public cloud integration such as AWS or Azure. The private cloud platform ThingsMaster can also be deployed for instant and secured access to for surveillance and IIOT management. With the versatile AC/DC/Solar power sources, you can easily install the box on roadside power tower, street light or wall mount on the wall/roof in the field.



### Features & Benefits

#### 60W Ultra PoE

- 2 Giga Ultra PoE 802.3bt Ports with 60W/per port
- 2 Giga PoE+ 802.3at Ports with 30W/per port
- 1 Internal PoE+ 802.3at WAN port for VPN, NAT, Routing Expansion
- PoE Enable/Disable, Budget Control, Port Control, Port, Priority, PD Alive Check and port status
- Max. 240W power budget for PoE & DC Output

#### Weather proof IP67 Enclosure and cable gland connectors

- Four Giga PoE ports
- Two 100/1000M Fiber SFP slots

#### SCB1200 only

- One RS232/422/485 RJ-45 port
- One Audio RJ12 port
- Two Digital Inputs
- Two Relay Outputs

#### Waterproof M12 connector

- Two DC24V outputs
- One AC100~240V Input

Internal One RS232/422/485 DB9 port

Internal One USB, and One SD socket for Storage

#### Optional Wireless Expansion

- Support mPCIe & SIM socket for wireless expansion
- SCB LTE Module and Antenna Kit
  - LTE Cat.4 Cellular Module
  - LTE+GPS Antenna on the top of the box
  - 150 UL, 50M DL, FDD/TDD-LTE
- SCB Industrial WLAN Module
  - N-Type Antenna Socket on the top of the box
  - 5G/2.4G 802.11ac/n WiFi 2T2R

#### Optional Basic Solar Kit

- 54V Battery Charge Control board for Solar power input
- Typical 48V/2.5AH Battery for power shortage

#### Management Features

- Various configuration paths, including WebGUI, CLI, SNMP, LAN Utility (ViewMaster), and NMS (NetMaster)
- Support ViewMaster Utility, Remote configuration software utility
- Redundancy: WAN to LTE redundancy
- Diagnostic tool includes Radio LED, Ping, TFTP, SNMP Trap, E-mail Alert and System Log
- LTE watchdog, auto-reconnect cellular connection

#### ITU-T G.8032 v1/v2 ERPS Ring Redundancy

- An ITU standard Ring redundancy Protocol
- Provide sub-50ms protection and recovery switching for Ethernet traffic
- Interoperate with 3rd party industrial switch and still remain fast recovery time STP/RSTP
- Efficient network interconnection and topology with ERPS Chain, multiple chains

#### Enhanced Cyber Security for Critical Application

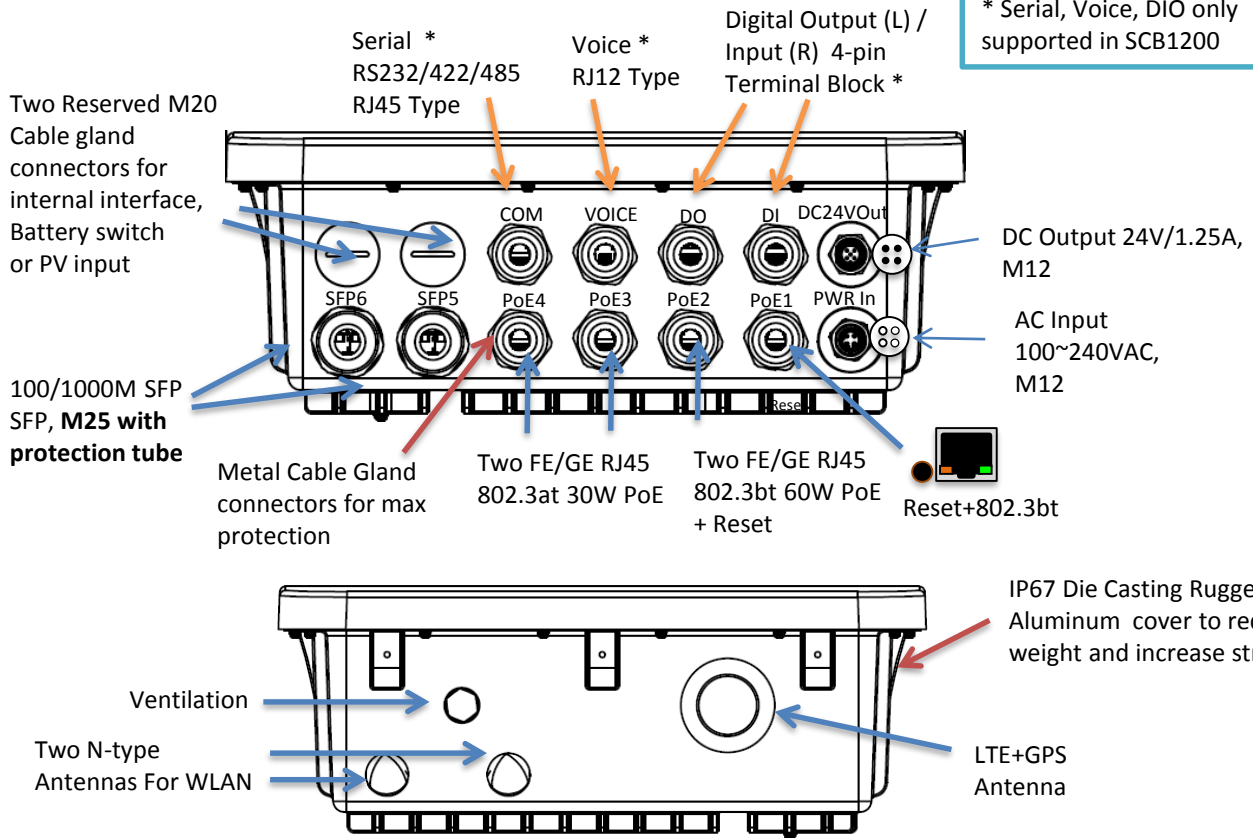
- Firewall for traffic classification, port forwarding
- Support NAT, DMZ for LAN protection
- Support OpenVPN, IPsec for secure connection
- Support HTTPs/SSH secure login

#### Cloud Management over ThingsMaster

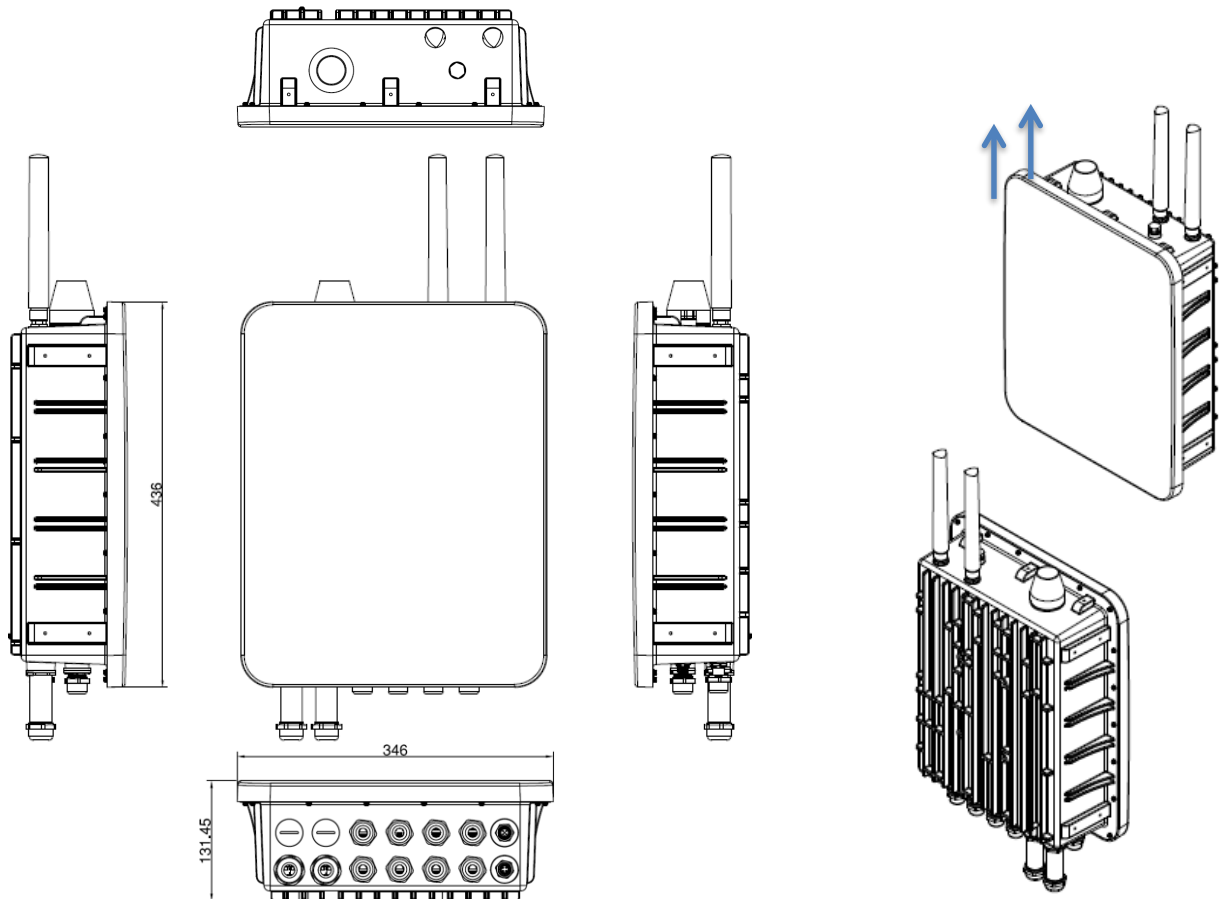
- Support Amazon AWS & Microsoft Azure cloud service
- Support proprietary ThingsMaster cloud service
- Support Modbus Tag to collect data from Modbus devices
- Interactive monitoring dashboard and map shows the status, signal strength, and location
- Supports over-the-air batch device registration, configuration and firmware update
- Set alerts on critical events to prevent downtime (i.e signal strength is too low or temperature is too high)



## Interfaces



## Dimensions



### Secure IoT Modbus Tags

Tag-based data acquisition with MQTT support

MQTT client acting as publisher and subscriber

**The latest TLS encryption and X.509 authentication**

Selectable serial port and data type. Sensor alive check and display sensor value.

### GPS/BDS/GLONASS/Galileo

Latitude

Longitude

**Attitude**

Speed



Home > IoT > Modbus Device

AWS IoT   Azure IoT   Private IoT   **Modbus Device**   RMS

#### Modbus Logging

**Modbus Logging**  Enable

Name:  // Tag Name

Serial:  // Slave Address

Slave ID:

PLC Address:

Function:  // Data Address, Register Address

Data Type:

#### Modbus RTU Slave Tag List

Select	Name	Serial	Slave ID	Address	Function Code	Data Type	Edit	Alive	Value
<input type="checkbox"/>	PM1	1	4	1	03	int16	<input type="button" value="Edit"/>	Yes	10
<input type="checkbox"/>	PM2_5	1	4	2	03	uint16	<input type="button" value="Edit"/>	Yes	13
<input type="checkbox"/>	PM10	1	4	3	03	uint16	<input type="button" value="Edit"/>	Yes	13
<input type="checkbox"/>	CO2	1	1	562	03	uint16	<input type="button" value="Edit"/>	Yes	1107
<input type="checkbox"/>	Temperature	1	1	564	03	int16	<input type="button" value="Edit"/>	Yes	255
<input type="checkbox"/>	Humidity	1	1	566	03	int16	<input type="button" value="Edit"/>	Yes	629
<input type="checkbox"/>	Temperature_f	1	1	1	03	float	<input type="button" value="Edit"/>	Yes	25.486820

Home > GPS > GPS Status

**GPS Status**   GPS Setting

#### GPS Status

**GPS**

Status: OK

Date: 140518

UTC: 035331.0

Latitude: 24 58.4485N

Longitude: 121 32.9141E

Altitude(m): 110.0

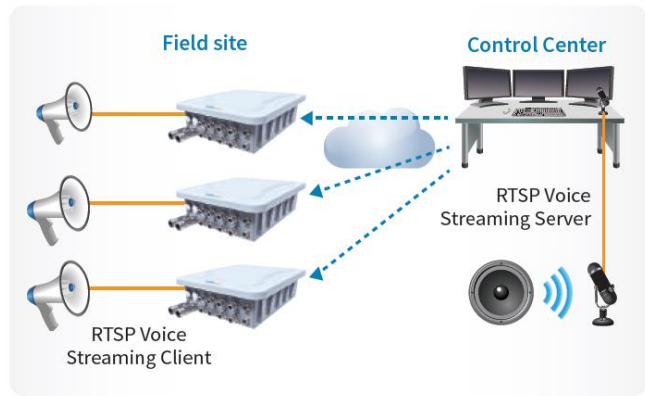
Speed over ground(Km/h): 0.0

Number of satellites: 9

### VoIP Voice Broadcast

RTSP voice streaming Server/Client for VoIP broadcast

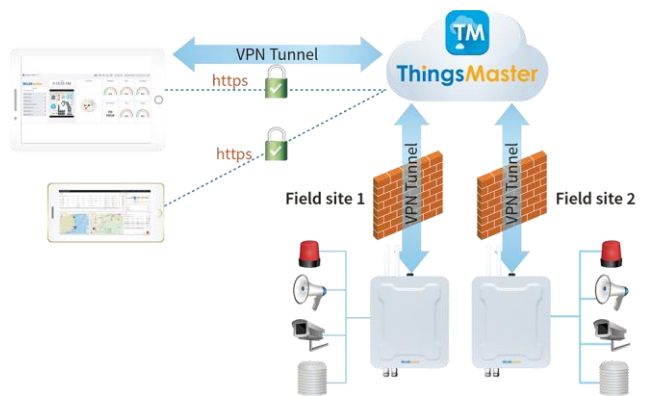
1 to N VoIP broadcasting



### Secured Multi-sites Management

N to N VPN

Latest TLS encryption and X.509 authentication



### Device Management Over-the-Air

Interactive monitoring dashboard and map to show the status, signal strength, and location of devices deployed

Over-the-air batch device registration, configuration and firmware update

#### Batch Configuration and Reboot OTA

Group Selection

Select entities: MR001, MR002, MR003, MR004, MR005, MR006, MR007, MR008, MR009, MR010

Batch type:

Import device config:

Drop a file or click to select a file to upload:

## IP67 Waterproof Enclosure and abundant interfaces for Smart City Application

### Four Gigabit PoE ports

- Two 802.3bt PoE Ultra with max. 60W power
- Two 802.3at PoE Plus with max. 30W power

### Two Gigabit SFP LAN Ports for Long Distance Installation

### One Internal Gigabit PoE WAN port

- NAT, Firewall and Secure Connectivity features

### IIoT Expansion Interfaces

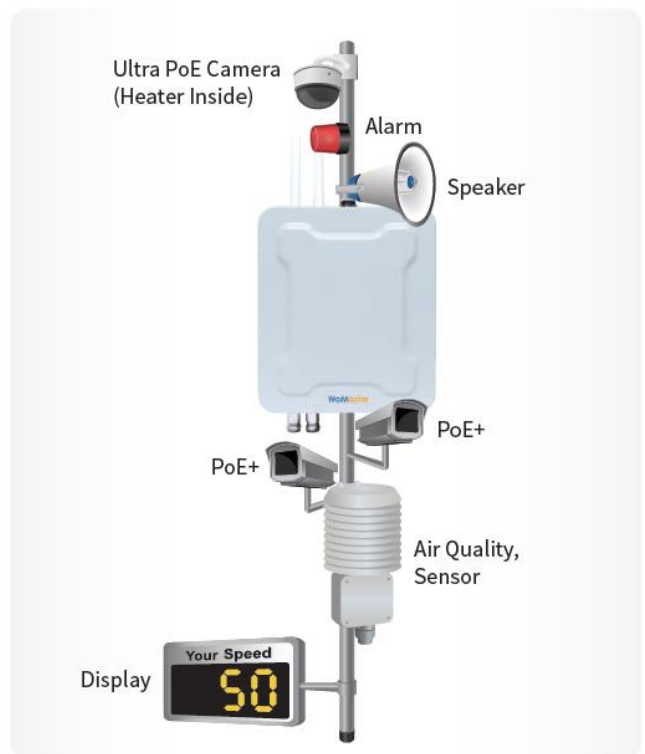
- External: One RS232/422/485, Two DI, Two DO, Audio
- Internal: One RS232/422/485, One USB, One SD

### AC Input & DC Output

- 100~240V AC Input
- 24V/1.25A DC Output

### IP67 Outdoor Enclosure

### Two mPCIe, dual SIM for Wireless expansion



## ERPS v2 Ring with Two Gigabit Fiber ports

### Two Gigabit SFP Ports

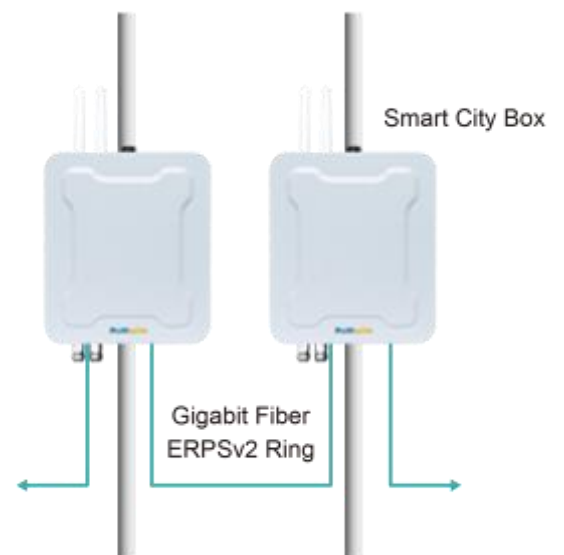
- Each supports 100M or 1000M SFP
- Wire-speed Switching, no traffic loss

### Ring Redundancy

- 802.1D-2004 Rapid Spanning Tree Protocol
- ITU G.8032 Ethernet Ring Protection Switch version 2, <50ms recovery time, flexible Ring architectures

### L2 Managements

- VLAN, QoS, IGMP Snooping
- LLDP, SNMP, Rate Control
- Port/MAC/IP Security



## SCB1200 Basic Solar Kit

### Basic Solar Kit

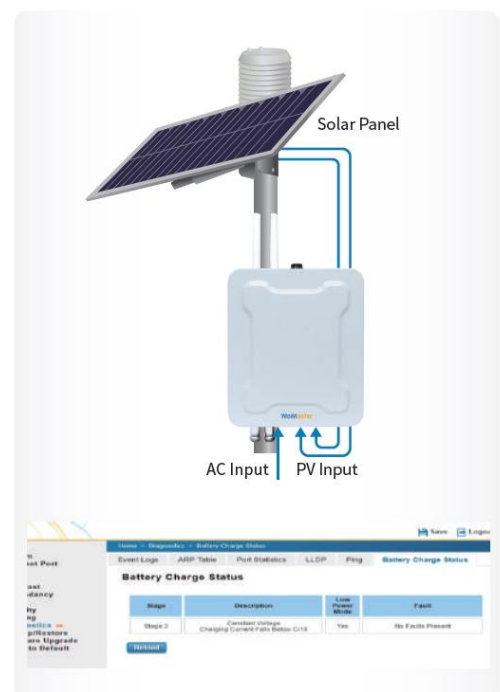
- Typ. 48V/2.5AH Battery
- 54V Battery charger board
- Reserved 2xM20 hole for PV input

### Test and Assembly prior to shipment

### MC4 Connector for PV+/PV- Input

### Other optional Solar Power Band by Request

- High Power Solar Panel or Panel farm
- Pole mount external Battery
- Other optional Battery





## Smart Energy Solution

-Monitor meter voltage, frequency, power, current, energy consumption, etc.

## Industrial 4.0 Solution

Monitor machine downtime, speed, utilization rate, yield rate, productivity, etc.

## Smart Farming Solution

Monitor silos weights, silos temperature, silos humidity, etc

## Smart Bus Tracking Solution

Monitor bus route, speed, passenger count, fuel etc.

## Smart Environment Solution

Monitor PM1/2.5/10, CO2, temperature, humidity, radiation, wind speed, etc.

## Smart Metering Solution

Monitor district energy consumed, water consumed, etc.

Technology	
<b>Standard</b>	IEEE 802.3 10Base-TX Ethernet
	IEEE 802.3u 100Base-TX Fast Ethernet
	IEEE 802.3ab 1000Base-T Gigabit Ethernet copper
	IEEE 802.3z Gigabit Ethernet Fiber
	IEEE 802.3af/at/bt Power-over-Ethernet
	IEEE 802.1Q for VLAN
	IEEE 802.1p Class of Service
	IEEE 802.1D-2004 Rapid Spanning Tree Protocol
	ITU-T G.8032 Version 2.0 Ethernet Ring Protection Switching (ERPSv2)
	3GPP GSM/GPRS/EDGE/UMTS/HSPA/LTE (By Request)
Interface	
SCB-1000 Series	
<b>Ethernet Port</b>	4 x 10/100/1000Base-T RJ45, M20 Cable Gland - 2 x PoE 802.3af/at, - 2 x PoE 802.3bt 2 x 100/1000Base-X SFP, M25 Cable Gland 1 x 10/100/1000Base-T RJ45, 802.3at/af PoE, Inside the box for Internal installation
<b>Ethernet Port LED</b>	TX Port: Link (Green On), Activity (Green Blinking)
<b>Reset</b>	System Reset(2~6 Seconds) / Default Settings Reset(over 7 Seconds) (Mechanical: Together with Port 1)
<b>mPCIe Socket</b>	2 x mPCIe sockets - 1 x mPCIe bus, available for 802.11ac/n/g/a/b WLAN expansion - 1 x USB bus, available for Cellular expansion
<b>SIM Socket</b>	2 x NANO SIM sockets inside, only available for SCB LTE module
<b>Antenna Socket</b>	1 x LTE+GPS Antenna socket for SCB LTE module 2 x N-Type female Sockets for SCB WLAN module
<b>Power Input</b>	Power Input, 4-pin M12 power connector AC Model: 100~240V AC
<b>DC Output</b>	Dual Power Outputs, 4-pin M12 power connector max. 24VDC/1.25A output
<b>Beeper</b>	Continuous Di/Da Short Beep: Power On & System Boot Continuous Beep over 1 minute: System Boot FAILURE
SCB-1200 Series	
<b>Serial</b>	(Basic SCB-1000 interface) 2 x Software selectable RS232/422/485 interfaces (RS232 9-pin Full modem) Serial 1: RJ-45 Connector, M20 Cable Gland for external installation Serial 2: 9-pin DB9 within the box for internal installation LED: TX/RX transmission (Green Blinking) 15 KV ESD protection for all signals
<b>Digital Input</b>	2 x Digital Inputs- 4-pin Terminal block, M20 Cable Gland Low: 0~10V, High: 11~30V
<b>Digital Output</b>	2 x Dry Relay Outputs, 0.5A/24VDC, 4-pin Terminal Block, M20 Cable Gland
<b>VOICE</b>	RJ-12 Connector, Mono Amplifier for Speaker Out, M20 Cable Gland Pair 1(2,5): Microphone Pair 2(3,4): Speaker
<b>USB</b>	1 x USB A-Type socket
<b>SD</b>	1 x micro SD socket (Suggest Industrial Grade SD card)
Basic Solar Kit	
<b>Battery Charge Board</b>	Battery Charge Controller Board for AC/Solar power input and battery charge
<b>Internal Battery</b>	Typ. 48V/2.5AH (max. 54.6V) Internal Battery Battery ON/OFF switch to Enable Battery
<b>PV Input Connector</b>	1-pair MC4 Type PV Input connector for PV Input by the reserved holes in the bottom

Power Requirement	
Power Connector	1 x 4 Pin IP66/67 M12 power connector
Power Input Voltage	AC Model: 100~240VAC System Mainboard: 2 x 54VDC inputs
Reverse Polarity Protect	Yes
DC Output	1x 4 Pin IP67 M12 power connector 24VDC, 1.25A max. (DC 1+, DC 1-, DC 2+, DC 2-)
Power Consumption	Max. 250W full traffic with PD loading (Example: 150W for PD Loading, 30W for DC output, 10W for system mainboard.)
PoE	
Power forwarding mode	802.3at Alternative A; 802.3bt draft: 4 pairs
PoE Power Budget	System: Up to 210W, Max. 150W@75°C Port 1/2: 4-pair IEEE 802.3bt Draft 2.0 Type 3, Max. 60W Port 3/4, WAN: IEEE 802.3at, Max. 30W
PoE Standard	IEEE 802.3af/at, IEEE 802.3bt Draft 2.0 Type 3
Management	System/Port Power Budget Control, PoE Scheduling, Priority, PD Alive Check, PoE Status
Software	
Management Interface	CGI WebGUI, Command Line Interface (CLI), SNMP
User Management	Radius client*, TACACS+*, local database
Time Management	NTPv3, SNTP, Cellular Time
Network Management	IPv4, DDNS, SNMP v1/v2c/v3/Trap, LLDP, DHCP Server/Client/Relay, TFTP, System Log, ARP response over 802.2 LLC SNAP, Proxy ARP, DNS (client/proxy), Ping, Traceroute SCB1200: DI, DO, Serial, USB for Firmware upgrade, Configuration backup & restore SCB Wireless Expansion: WLAN AP/CPE mode, ERPS failure to LTE redundant(P2)
Traffic Management	802.1Q VLAN, QoS, IGMP Snooping, Rate control, up to 10K Jumbo Frame NAT Routing, Static Router, Traffic shaping
Security	Port Security, HTTPs, SSH Firewall (Inbound/outbound), DMZ, Port Forwarding
VPN	IPsec, OpenVPN (server/client), L2TP*
Redundancy Protocol	STP/RSTP, ITU-T G.8032 ERPSv2, VRRP
IIoT Industrial Protocol	Modbus TCP, MQTT, RESTful API
Private Cloud	ThingMaster, ThingMaster over-the-air Remote Management
Public Cloud	AWS, Azure Agent
Utility	ViewMaster, NetMaster Network Management System
Mechanical	
Installation	Wall-mount, Pole-mount
Enclosure Material	Aluminum
Vent	Protective Ventilation for Air and Moisture Breathing
GND	Grounding Nut with Washer
Dimension	346 x 406 x 142mm (W x H x D) / without wall-mount poles
Ingress Protection	IP67
Weight	SCB1200-AC: 6.84kg, SCB1200-AC+Battery: 8.01kg, SCB1200-AC+BASICSOLAR: 8.16kg without package. SCB1200-AC: 10.40kg, SCB1200-AC+Battery: 11.65kg, SCB1200-AC+BASICSOLAR: 11.78kg with Mounting & Package
Environmental	
Operating Temperature & Humidity	-40°C~75°C, 5%~95% Non-Condensing -10°C~55°C with Battery/Charger, 5%~95% Non-Condensing
Storage Temperature	-40°C~85°C
MTBF	>200,000 hours
Warranty	5 years (Battery 1 year)

Approval	
CE/FCC	CE(EN501214 Level) / FCC Part 15B
Railway Roadside EMC	EN50121-4
Traffic Control	NEMA-TS2 Compliance

## Ordering Information

Model Name	Description
SCB1000-AC	Industrial Smart City Box with 4GT PoE + 2GF, 1GT WAN, AC Input
SCB1200-AC	Industrial Smart City Box with 4GT PoE + 2GF, 1GT WAN, IIoT interfaces, AC Input (IIoT Interfaces: External 1xCOM,2xDI,2xDO,Voice; Internal 1GT WAN, 1xCOM, 1xUSB, 1xSD)
SCB1000-AC+Battery	Industrial Smart City Box with 4GT PoE + 2GF, 1GT WAN, AC Input, Battery Kit (Battery Kit: Typ. 48V/2.5AH Battery and AC charger board pre-installed inside.)
SCB1200-AC+Battery	Industrial Smart City Box with 4GT PoE + 2GF, 1GT WAN, IIoT interfaces, AC Input, Battery Kit (Battery Kit: Typ. 48V/2.5AH Battery and AC charger board pre-installed inside.)
SCB1000-AC+BasicSolar	Industrial Smart City Box with 4GT PoE + 2GF, 1GT WAN, AC Input, Basic Solar Kit (Basic Solar Kit: Typ. 48V/2.5AH Battery, AC/PV charger board & MC4 connector pre-installed inside.)
SCB1200-AC+BasicSolar	Industrial Smart City Box with 4GT PoE + 2GF, 1GT WAN, IIoT interfaces, AC Input, Basic Solar Kit (Basic Solar Kit: Typ. 48V/2.5AH Battery, AC/PV charger board & MC4 connector pre-installed inside.)
Package List	
	Product Unit (Without SFP transceiver)
	Quick Installation Guide
	Mounting Kit & Cable Gland Assembly Pack
SCB1000 Cable Gland Assembly pack	4 xM20 + 2 xM25 Fiber Cable Glands for SCB1000 package Including the Sealing Insert, Clamping Claw, Sealing Nut
SCB1200 Cable Gland Assembly pack	10 xM20 + 2 xM25 Fiber Cable Glands for SCB1200 package Including the Sealing Insert, Clamping Claw, Sealing Nut

## Optional Accessory

Ethernet & I/O Accessory	
SFPFExx series	WoMaster 100Mbps SFP transceivers
SFPGExx series	WoMaster 1000Mbps SFP transceivers
Basic Solar Kit	Typ. 48V/2.5AH Battery, AC/PV charger board, mounting plat and screws
Wireless Accessory	
SCB LTE Module and Antenna Kit, EU Band	Industrial LTE Cellular Module, EU Band EU: FDD B1/B3/B5/B7/B8/B20, TDD B38/B40/B41, WCDMA: B1/B5/B8, GSM: B3/B8 Antenna: LTE+GPS Antenna on the top of case GNSS- GPS/GLONASS/BeiDou/Galileo * Check LTE band for your country before purchase, pre-installed service is available.
SCB LTE Module and Antenna Kit, CN Band	Industrial LTE Cellular Module, CN Band CN: FDD B1/B3/B8, TDD B38/B39/B40/B41, TDSCDMA: B34/B39, WCDMA: B1/B8, GSM:900/1800 Antenna: LTE+GPS Antenna on the top of case GNSS- GPS/GLONASS/BeiDou/Galileo * Check LTE band for your country before purchase, pre-installed service is available.
SCB LTE Module and Antenna Kit, US Band	Industrial LTE Cellular Module, US Band US: FDD B2/B4/B12, WCDMA: B2/B4/B5 Antenna: LTE+GPS Antenna on the top of case GNSS-GPS/GLONASS/BeiDou/Galileo * Check LTE band for your country before purchase, pre-installed service is available.
SCB Industrial WLAN Module	Industrial 5G/2.4G 802.11ac/n WiFi 2T2R Module Pre-installed 2x N-Type Female Antenna sockets on the top of case Antenna: 2x External 2.4G/5G Antenna
EN110	Industrial RS485/ModBus_RTU to LoRa Convertor
External Antenna (Omni, Directional)	External 2.4G Antenna Series (Directional, Omni-Antennas) External 5G Antenna Series (Directional, Omni-Antennas)
Antenna Surge Protector	Antenna Surge Protector