

Industrial SD Card

ISDD361



The ADATA ISDD361 industrial-grade SD card implements SLC NAND Flash for superb reliability. It also features low power consumption, and high compatibility across diverse removable storage applications that require security, convenience, performance, and capacity. With a wide temperature tolerance range of -40°C to 85°C, the ISDD361 can operate normally even in harsh environments.

Features

- SLC NAND Flash for great durability and longevity
- 60K P/E Cycles – excellent endurance and reliability
- Supports BCH ECC (Error Correcting Code) technology
- Wide-Temperature operability: -40°C to 85°C
- Supports Wear Leveling and S.M.A.R.T. Monitor
- Suitable for industrial automation, surveillance, healthcare and in-vehicle applications

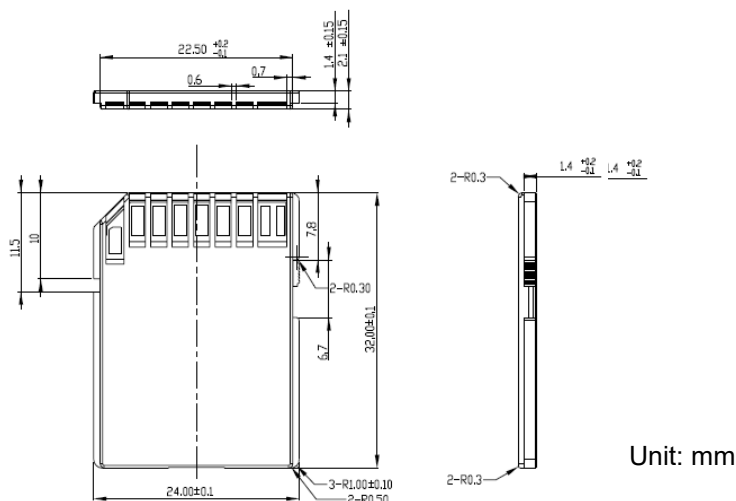
Ordering Information

Operating Temp.	256MB	512MB	1GB	2GB	4GB	8GB	16GB	32GB
-40°C to 85°C	ISDD361-256MW	ISDD361-512MW	ISDD361-001GW	ISDD361-002GW	ISDD361-004GW	ISDD361-008GW	ISDD361-016GW	ISDD361-032GW

Specifications

Model	ISDD361
Form Factor	SD
Capacity	256MB – 32GB
Interface	SD 2.0 (256MB – 2GB), SD 3.0 (4GB – 32GB)
Flash Type	SLC
Dimensions (L x W x H)	32 x 24 x 2.1mm
Sequential Read (Max.)	(SD 2.0) 23MB/s, (SD 3.0) 98MB/s
Sequential Write (Max.)	(SD 2.0) 19MB/s, (SD 3.0) 74MB/s
Speed Class	UHS Speed : Class 1
Operating Temperature (Industrial)	-40°C to 85°C
Operating Voltage	3.6V
Power Consumption (Max.)	0.5W
Shock Resistance	1500G/0.5ms, Half Sine Wave
Operating Humidity	5%-95% RH, non-condensing
Vibration Resistance	20G (20-2000Hz)
Technologies	BCH ECC, Wear Leveling, Garbage Collection, Bad Block Management, S.M.A.R.T. Monitor

Diagram



Contact Us

HQ (Taiwan):

T: +886-8228-0886

E: adata@adata.com

US:

T: +1-714-332-8708

E: IASales_us@adata.com

EU:

T: +49-899-0405-296

E: IASales_eu@adata.com

China

T: +86-21-6233-1010

E: IASales_cn@adata.com

JP:

T: +81-3-5807-0011

E: IASales_jp@adata.com

APAC/MEA:

E: IASales_apacmea@adata.com