

# AMAX-5018

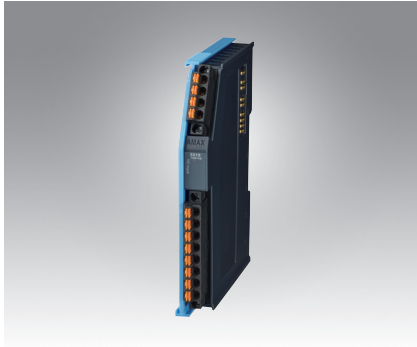
# AMAX-5024

# AMAX-5080

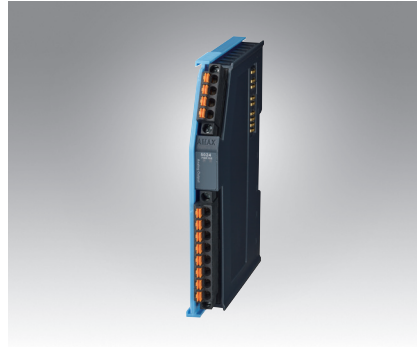
## 6-ch Thermocouple Input Module

## 4-ch Analog Output Module

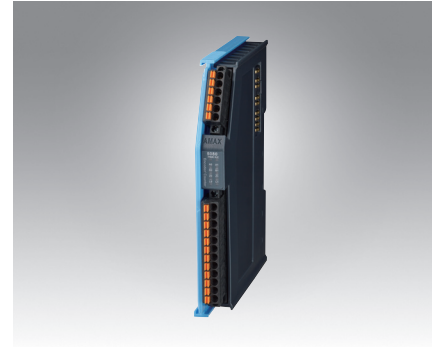
## 2-ch Counter/Encoder Input Module



AMAX-5018



AMAX-5024



AMAX-5080



### Specifications

#### General

- **Certification** CE, FCC class A
- **Connector** Pluggable 4P+8P push-in terminal (#24~16 AWG)
- **Enclosure** PC
- **Power Consumption** 2W@24V<sub>DC</sub>
- **Protocol** EtherCAT
- **Transmission Rate** 100Mbps
- **LED Indicator** PWR, RUN

#### Thermocouple Input

- **Channels** 6 differential
- **Input Type** V, mV, Thermocouple
- **Input Impedance** >2MΩ
- **Voltage Range** ±50 mV, ±100 mV, ±500 mV, ±1 V, ±2.5 V
- **Temperature Range** Type J (0 ~ 760°C)  
Type K (0 ~ 1370°C)  
Type T (-100 ~ 400°C)  
Type E (0 ~ 1000°C)  
Type R (500 ~ 1750°C)  
Type S (500 ~ 1750°C)  
Type B (500 ~ 1800°C)
- **Resolution** 16-bit with ±0.1% FSR accuracy
- **Sample Rate** 100 sample/s (per channel)

#### Protection

- **Isolation Voltage** 2,000 V<sub>DC</sub>

#### Environment

- **Operation Temperature** -25~60°C (vertical mounted)
- **Storage Temperature** -40~85°C
- **Relative Humidity** 95% (non-condense)

### Ordering Information

- **AMAX-5018** 6-ch Thermocouple Input Module

### Specifications

#### General

- **Certification** CE, FCC class A
- **Connector** Pluggable 4P+8P push-in terminal (#24~16 AWG)
- **Enclosure** PC
- **Power Consumption** 3.5W@24V<sub>DC</sub>
- **Protocol** EtherCAT
- **Transmission Rate** 100Mbps
- **Distributed Clock** Default inactive
- **LED Indicator** PWR, RUN

#### Analog Output

- **Channels** 4
- **Output Type** V, mV, mA
- **Output Range** 0~5V, 0~10V, ±5V, ±10V, 4~20mA, 0~20mA
- **Resolution** 16-bit with accuracy ±0.01% FSR@25°C
- **Slew Rate** Configurable
- **Drift** ± 50 ppm/°C
- **Current Load Resistor** Max. 500 Ω
- **Voltage Load Resistor** Min. 1KΩ

#### Protection

- **Isolation Voltage** 2,000 V<sub>DC</sub>

#### Environment

- **Operation Temperature** -25~60°C (vertical mounted)
- **Storage Temperature** -40~85°C
- **Relative Humidity** 95% (non-condense)

### Ordering Information

- **AMAX-5024** 4-ch Analog Output Module

### Specifications

#### General

- **Certification** CE, FCC class A
- **Connector** Pluggable 4P+8P push-in terminal (#24~16 AWG)
- **Enclosure** PC
- **Power Consumption** 2W@24V<sub>DC</sub>
- **Protocol** EtherCAT
- **Transmission Rate** 100Mbps
- **LED Indicator** PWR, RUN, A+, A-, B+, B-, Z+, Z-, L+, L-

#### Counter/Encoder Input

- **Channels** 2
- **Counting Range** 32-bit
- **Mode** Counter (up/down, bi-direction, up, A/B Phase)

#### Frequency

- **Signal Input** Logic level 0: 0 ~ 5 V<sub>DC</sub>  
Logic level 1: 11 ~ 30 V<sub>DC</sub>
- **Input Frequency** 1MHz x4 (counter mode)

#### Protection

- **Isolation Voltage** 2,000 V<sub>DC</sub>

#### Environment

- **Operation Temperature** -25~60°C (vertical mounted)
- **Storage Temperature** -40~85°C
- **Relative Humidity** 95% (non-condense)

### Ordering Information

- **AMAX-5080** 2-ch Counter/Encoder Input Module