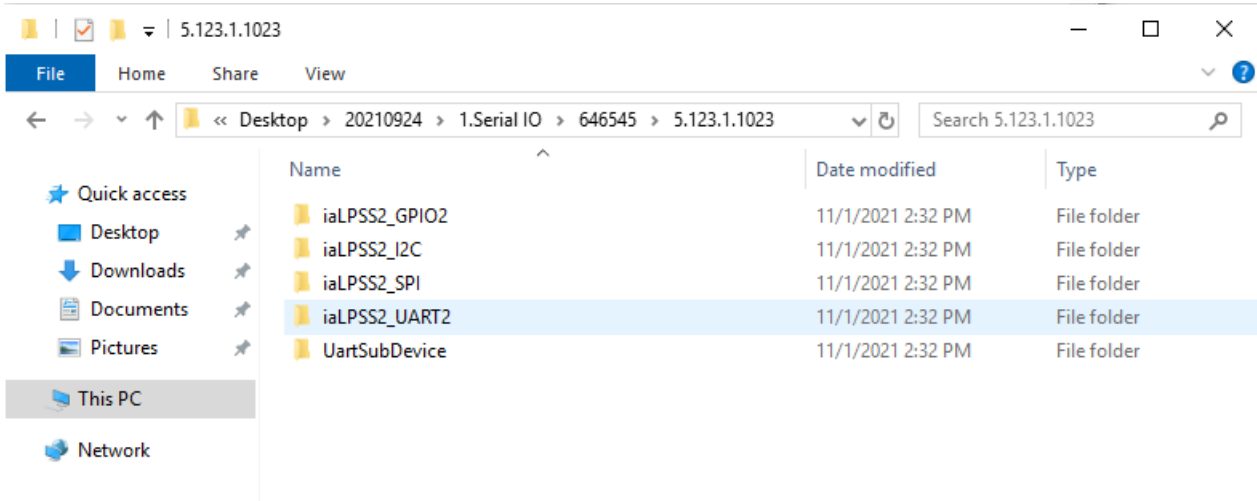

Drivers Installation Guide

Driver Pack	20211109
Model	NViS1482/NViS14162
Installation Sequence	1. Serial IO 2. Chipset 3. CSE 4. Graphics 5. i225 Network Adapter 6. Realtek Audio

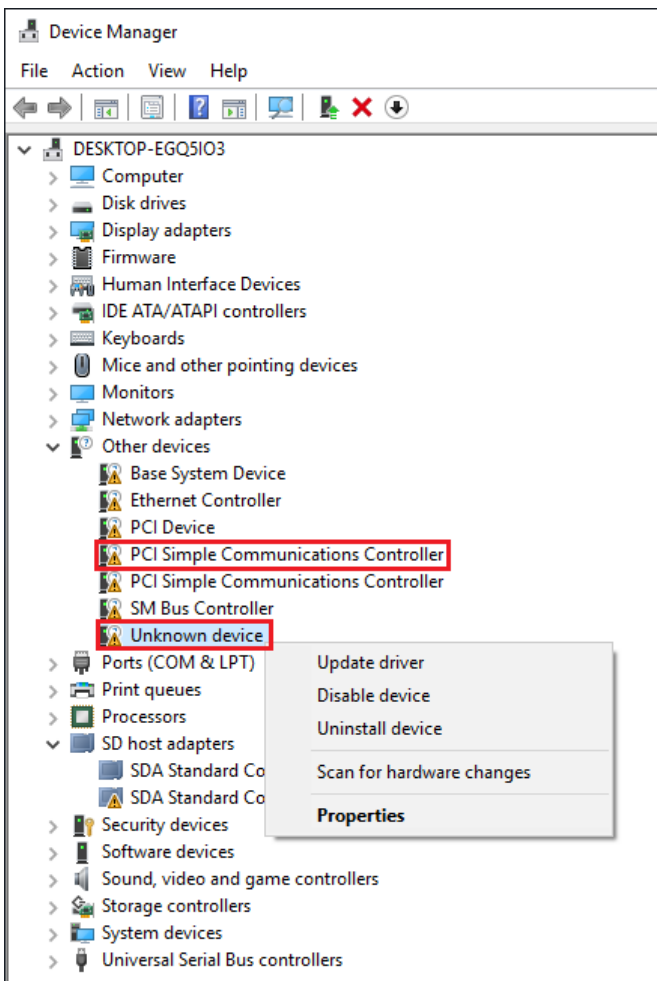
1. Serial IO

1.1 Extract Serial IO driver pack to latest layer

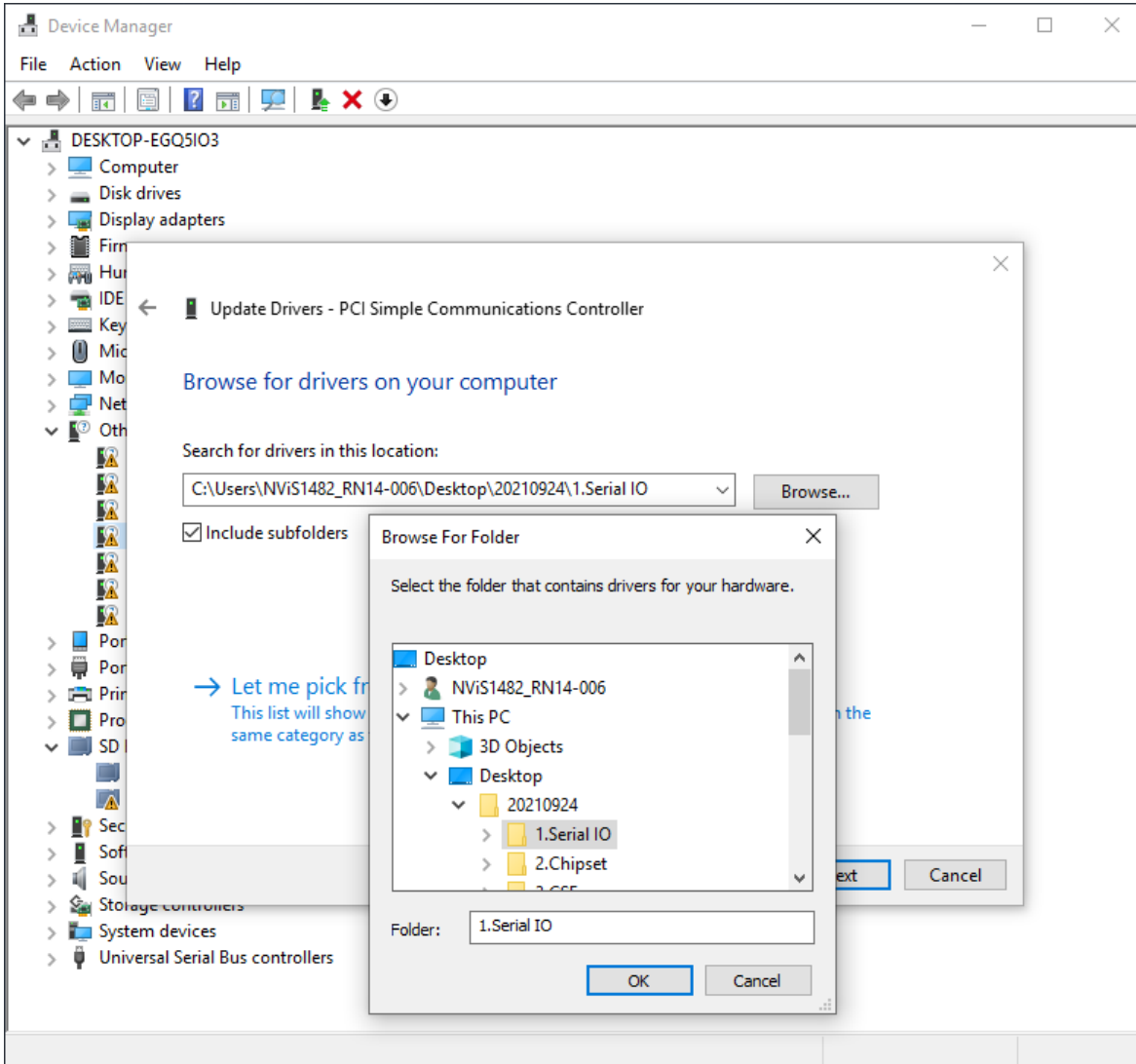


1.2 Execute Device Manager.

Please note that there is only one PCI Simple Communications Controller is the target device.

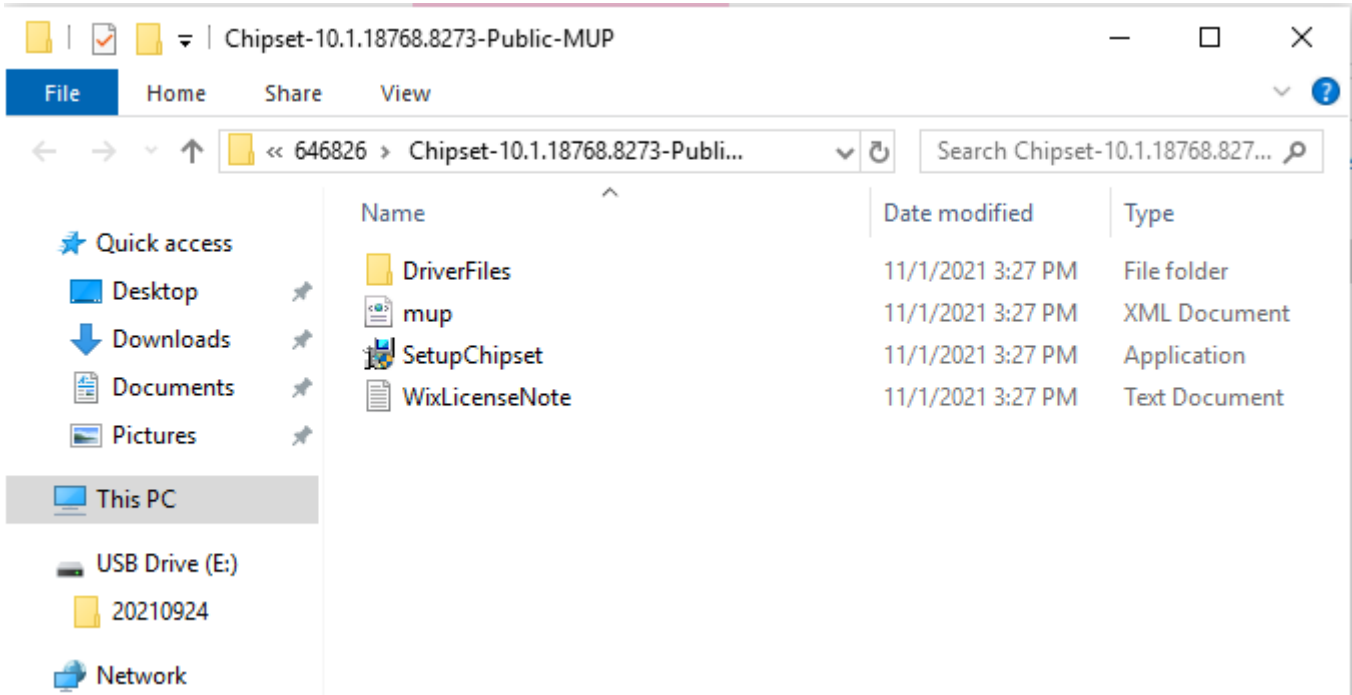


1.3 Update driver manually

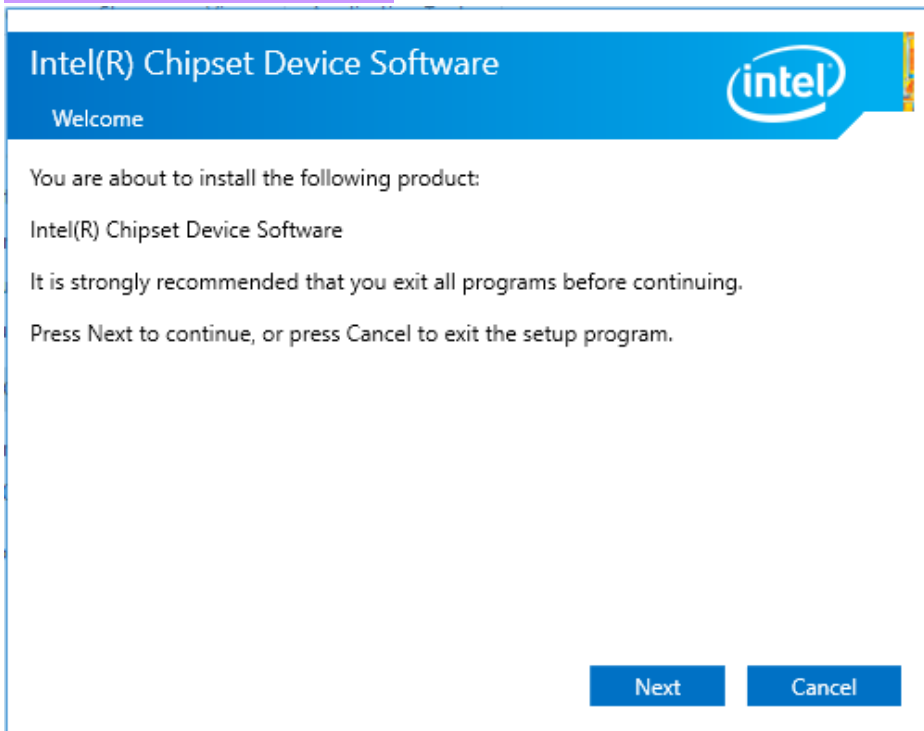


2. Chipset

2.1 Extract Chipset driver pack to least layer



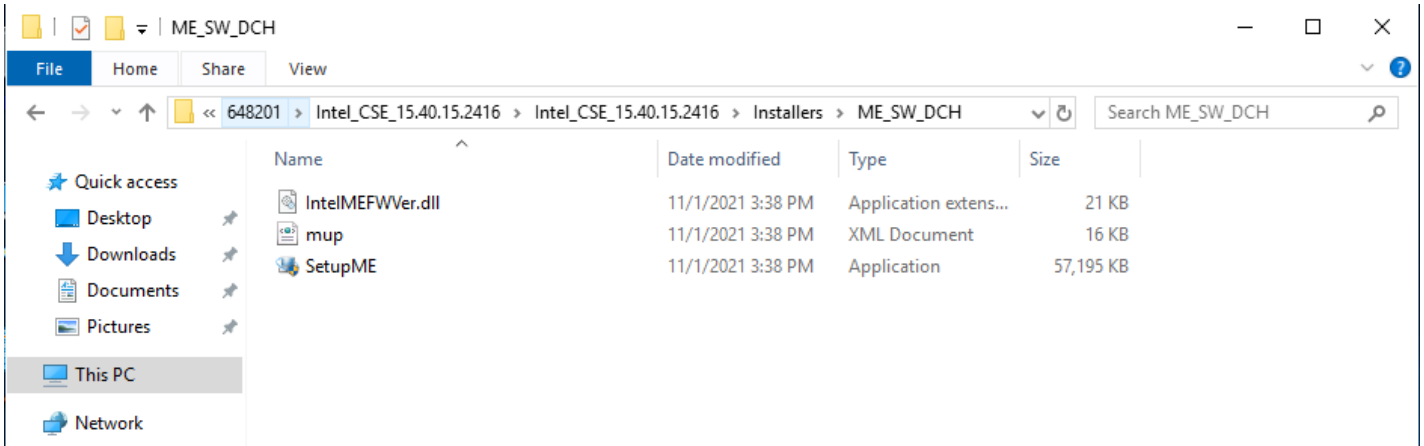
2.2 Execute SetupChipset.exe



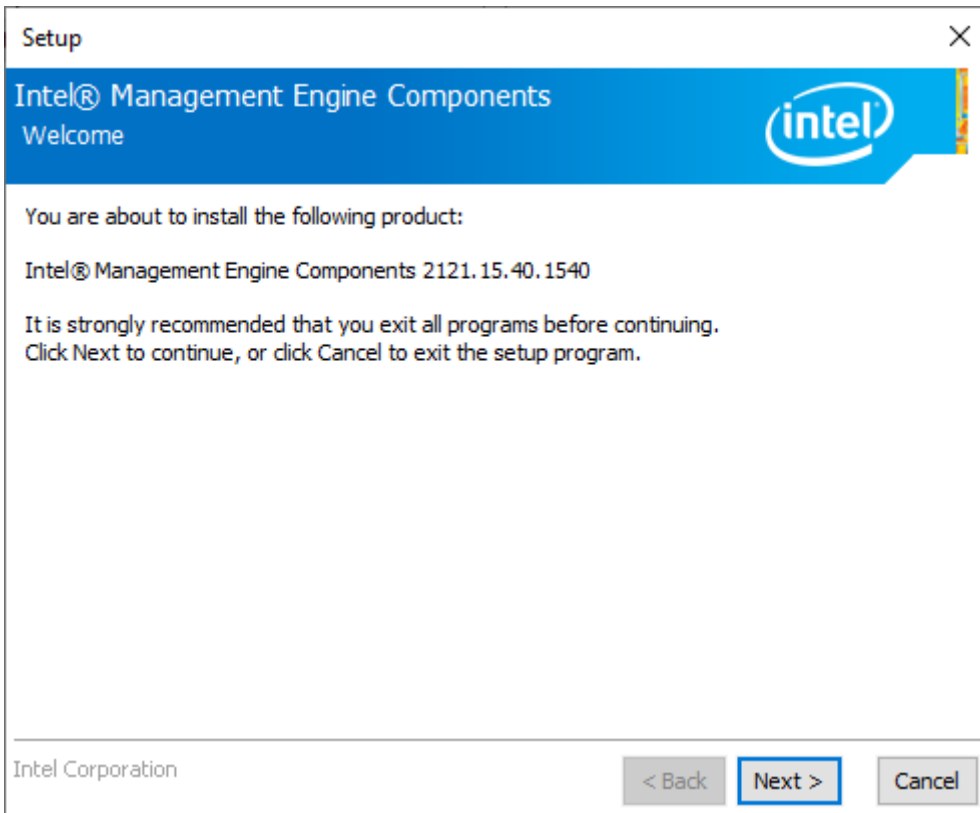
2.3 Restart Windows to apply driver changes

3. CSE

3.1 Extract CSE driver pack to least layer

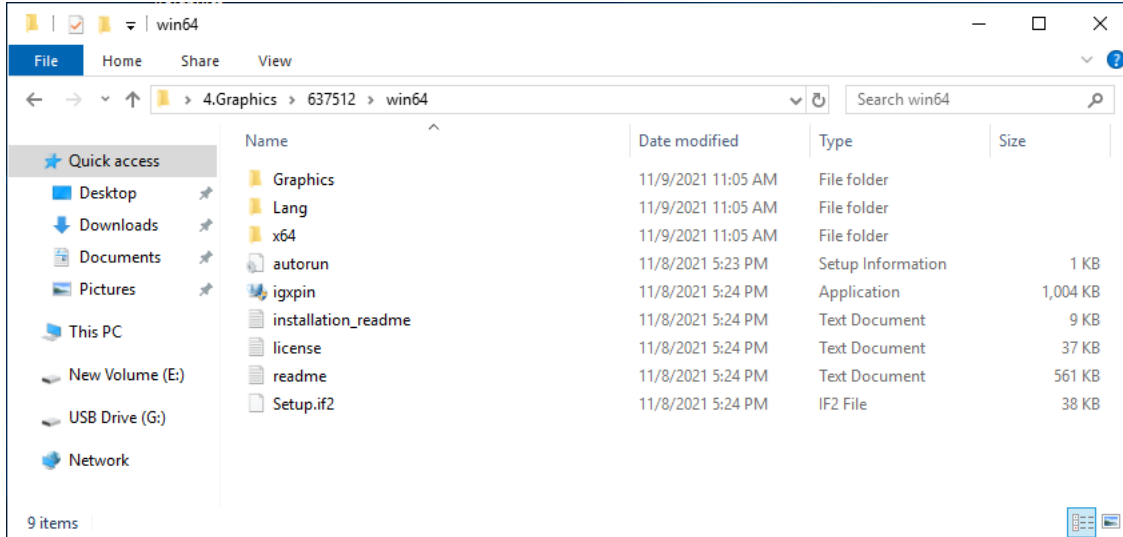


3.2 Execute SetupME.exe

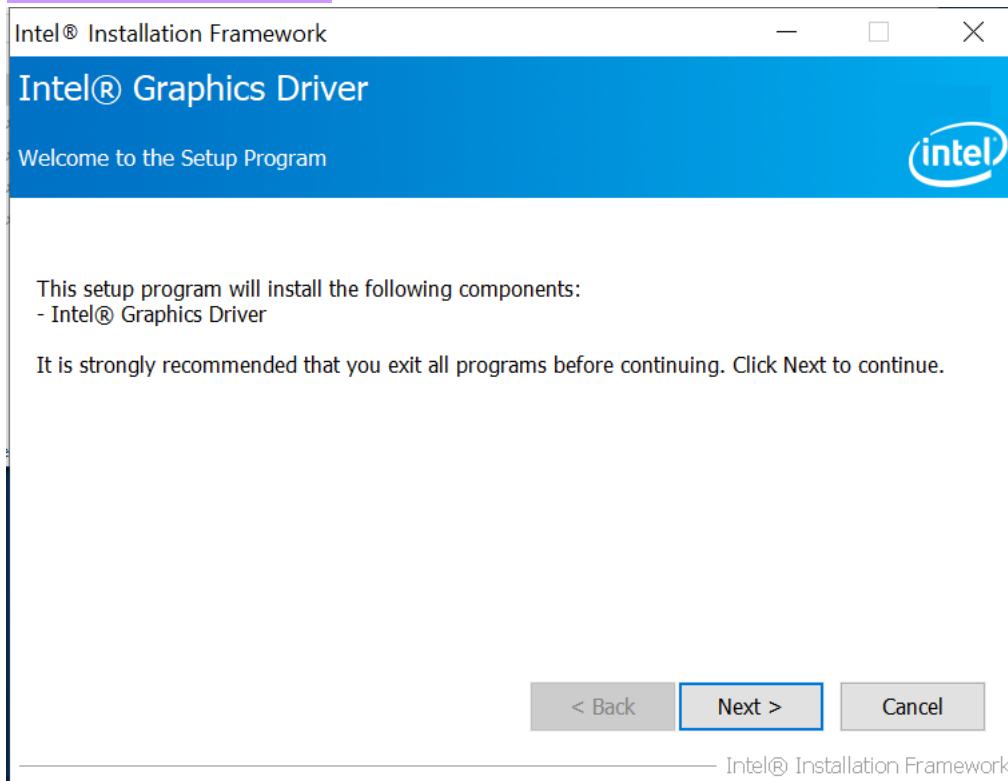


4. Graphics

4.1 Extract Graphics driver pack

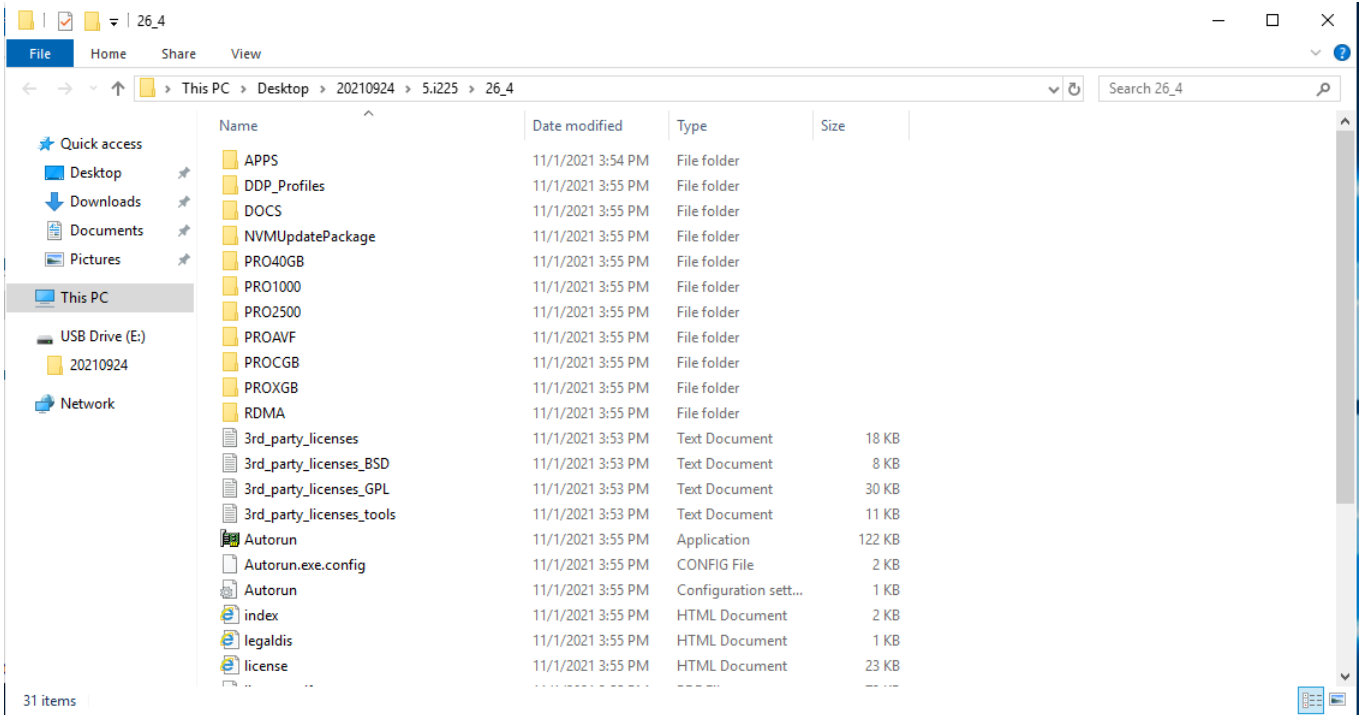


4.2 Execute Installer.exe

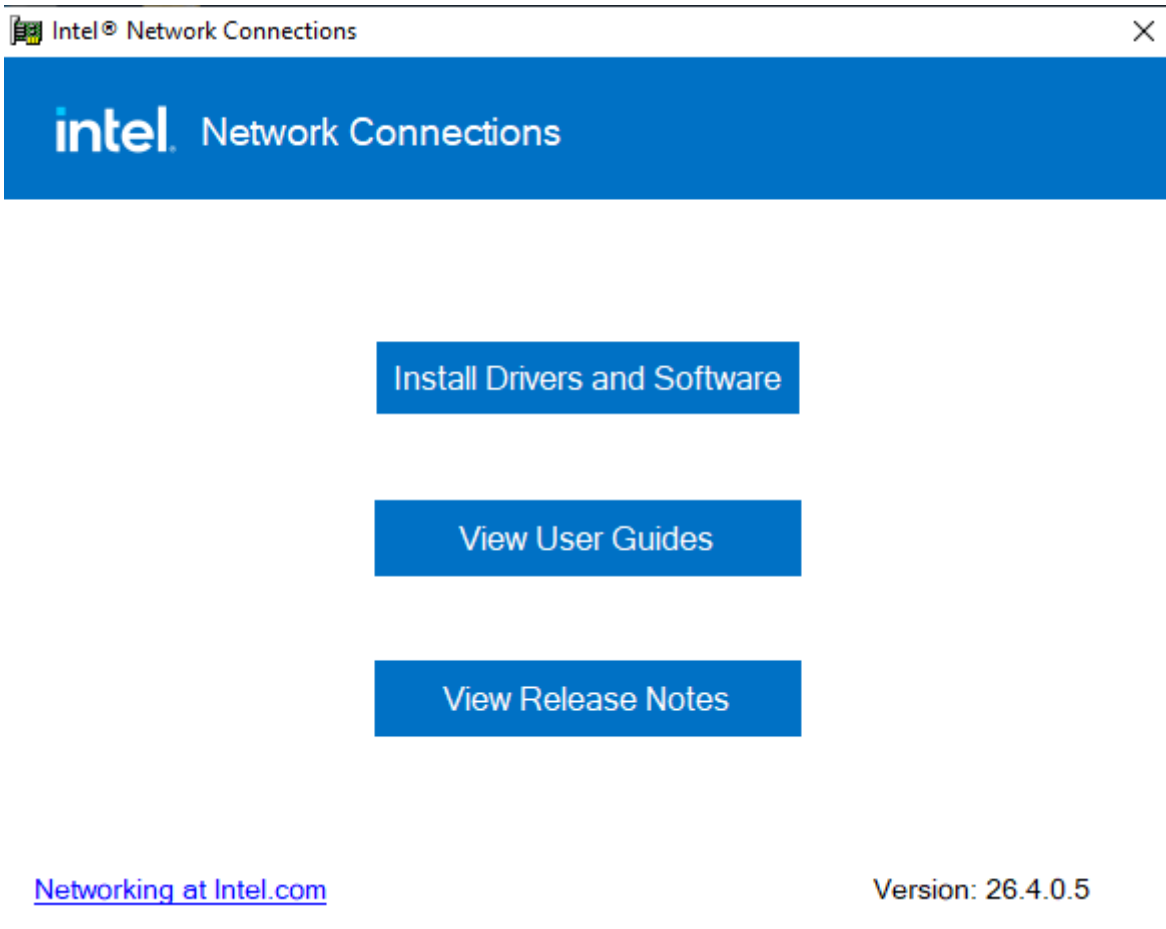


5. i225

5.1 Extract i225 driver pack

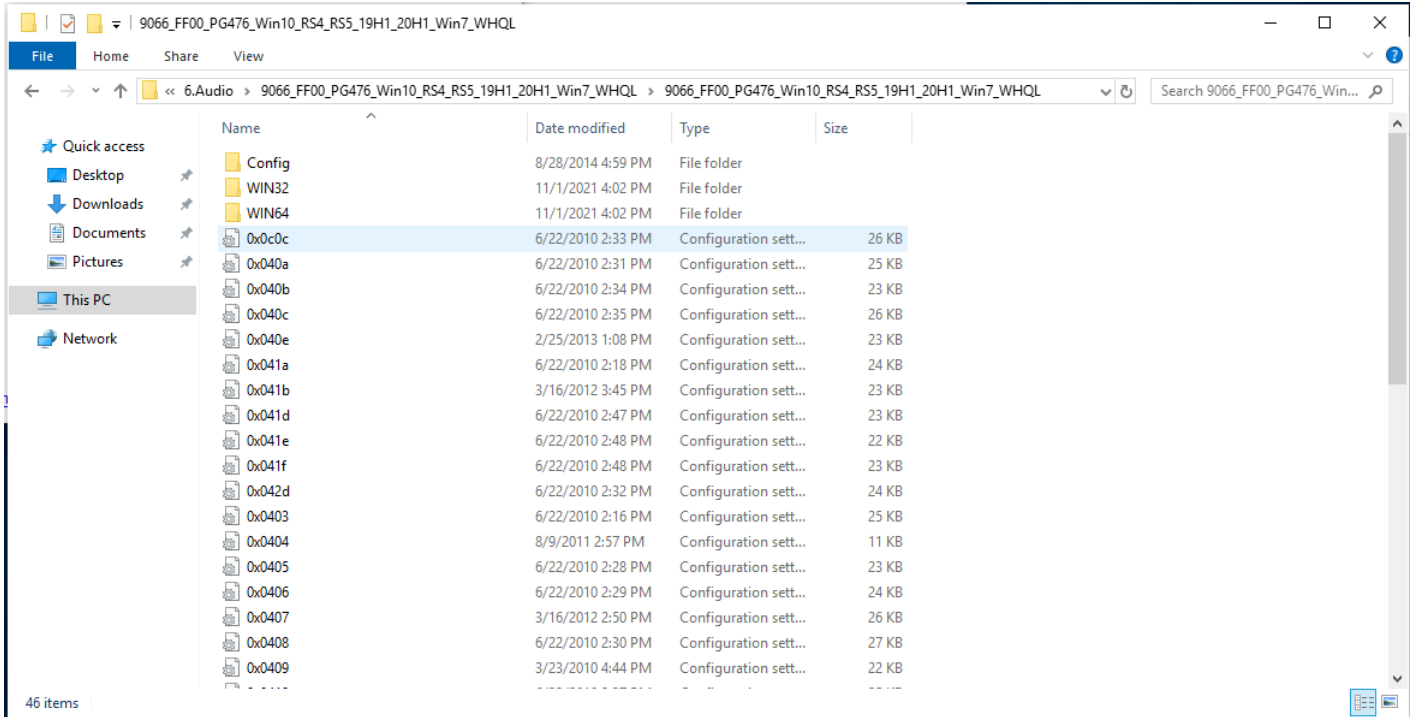


5.2 *Execute Autorun.exe*

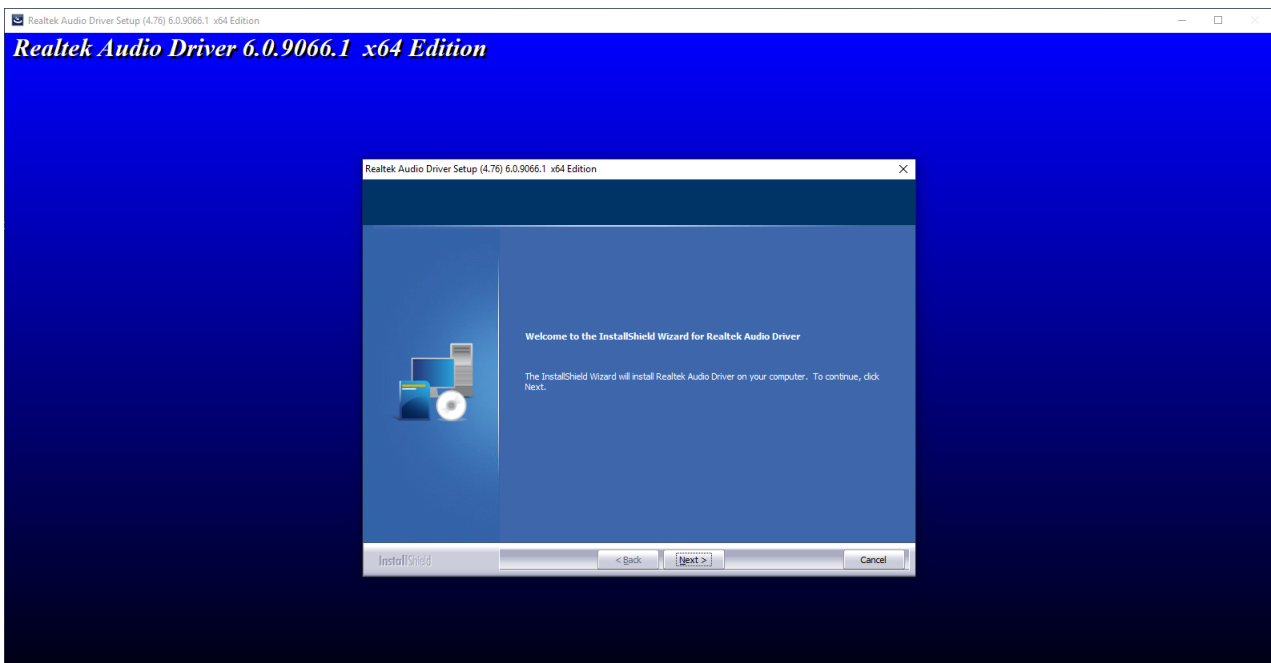


6. Audio

6.1 Extract Audio driver pack



6.2 Execute Setup.exe



6.3 Restart Windows to apply driver changes